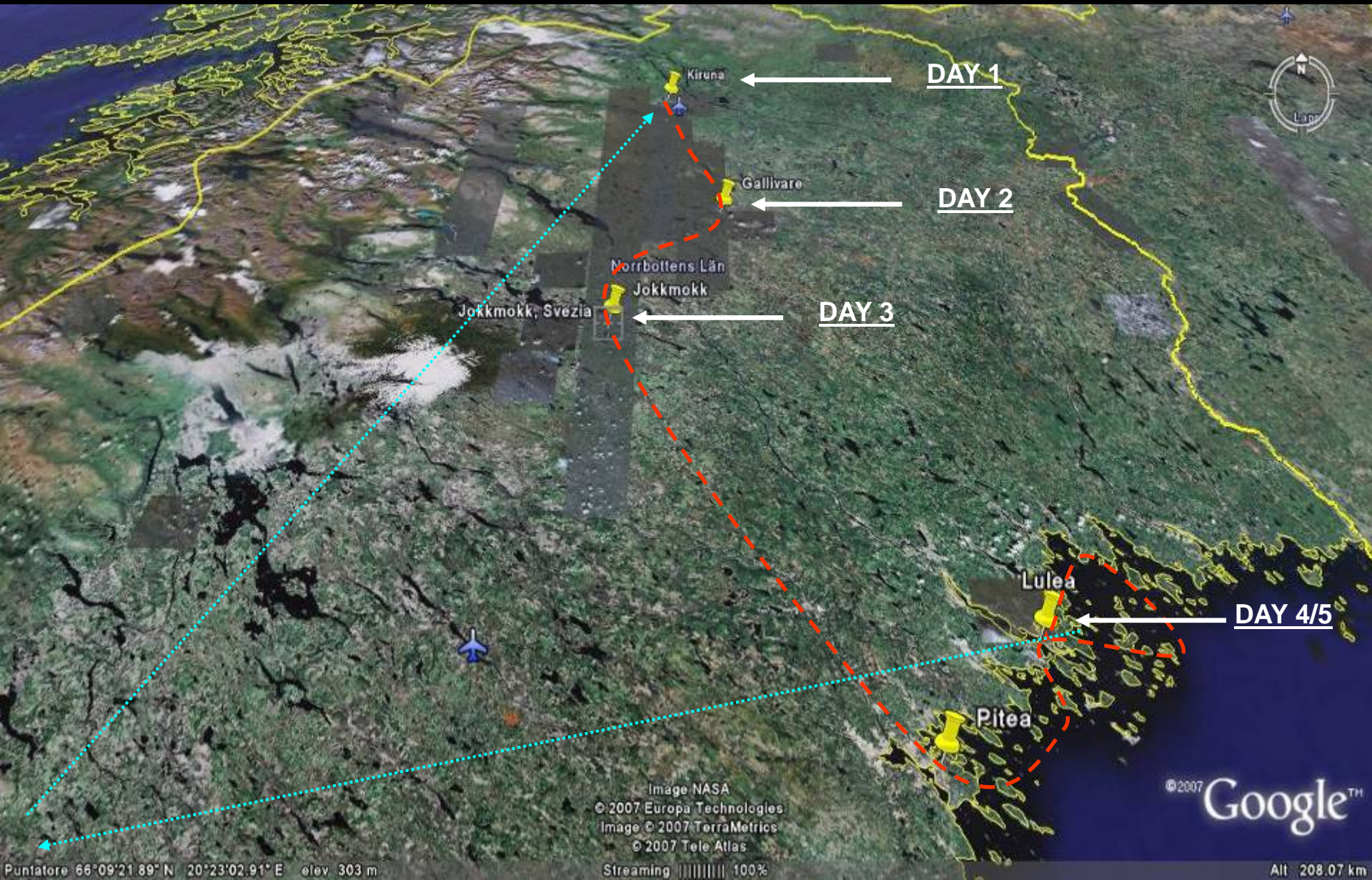


THE ITINERARY



Puntatore 66°09'21.89" N 20°23'02.91" E elev 303 m

Image NASA
© 2007 Europa Technologies
Image © 2007 TerraMetrics
© 2007 Tele Atlas

Streaming ||||| 100%

©2007 Google™

Alt 208.07 km

Flight schedule



1 SK 574	Milano - Stockholm	<u>1040</u> - 1310	Saturday
2 SK1044	Stockholm - Kiruna	1400 - 1535	Saturday
3 SK 009	Lulea - Stockholm	1240 - 1355	Wednesday
4 SK 579	Stockholm - Milano	1600 - <u>1835</u>	Wednesday

Local host from ICEHOTEL® will meet and welcome the guests to Kiruna, the small mining town 200 km north of the Arctic Circle.

The mining town Kiruna is a product of the big iron ore find that was found by the Laplanders as early as in the middle of the 17th century.

Today Kiruna is a town in the sub arctic area, planned and built for the long and cold winters and the short but intensive summers.

Kiruna is also the center of research upon the Northern Lights.

During the winter period from December to April, the winter sky is often lit up by the amazing Aurora Borealis, with its beautiful and magic colorings and scribbling.

Once at the Airport guest will be welcome in a Lappish tepee and equipped with warm clothes (suite, hat, gloves, boots) and helmet !

Snowmobile will be ready to Start !!

After a short introduction to a safe drive on snow, guest will take their snowmobile to start the first Arctic Experience trough a beautiful itinerary till the Ice Hotel (luggage will be already in guests rooms at their arrival).



Arrival in the small village of Jukkasjärvi. Beautifully situated by the Torne River.

The history of Jukkasjärvi (the name Jukkasjärvi means meeting place) goes back to the 17th century when it was a market and meeting place for the Laplanders, settlers and hunters in the area.

To welcome the guests, the staff will invite the Members for a guided tour. In the Icehotel you will find a chapel, where services, weddings and christenings take place, all the beautifully ornamented rooms and suites and sculptures made of snow and ice.

At last, but surely not at least - the Absolut Icebar, made of ice from the Torne River.

The Absolut Icebar was elected in 1994 one the ten most spectacular bars in the world by the magazine Newsweek.

The tour ends with a drink served in an ice glass at the bar.





ICEHOTEL is situated in the village Jukkasjärvi, 200 kilometres north of the Arctic Circle in Sweden. The heart and backbone is the River Torne flowing freely through the unspoilt wilderness. Covered with a meter thick ice layer winter time the river is the source of all our art, architecture and design. The pure water and the steady movement of the river creates the clearest ice possible.

For over a thousand years, Jukkasjärvi has been a meeting place for the Saami people. Now through ICEHOTEL, Jukkasjärvi has also become a meeting place for artists and world travellers. The lifeline of Jukkasjärvi and the ICEHOTEL is the Torne River. Covered by up to a meter of ice for most of the year, the river is the source of all our materials for art, architecture and design. The clean water complemented by the constant movement of the river produce crystal clear ice. Art is the heart of the ICEHOTEL



The base program includes the overnight at the Ice Hotel Cottages with, newly built double rooms with corner windows, all in charming Scandinavian design. Bathroom with shower and toilet.

The sauna department, the so called "blue sauna" will be heated for guests.

In this sauna department you can also try "hot-tubs". It is a fantastic feeling to sit outside the sauna in a hot-tub filled with warm water under the open winter sky! With some luck the winter sky will be lit up by the amazing Aurora Borealis, with its beautiful and magic colours and scribbling.

The hot-tub is surrounded by a snow wall so that the guests can have a bath in private. 6 people at the time in the hot-tub.

The more "Extreme" guests could join the experience to sleep in the ICE (extra cost)!

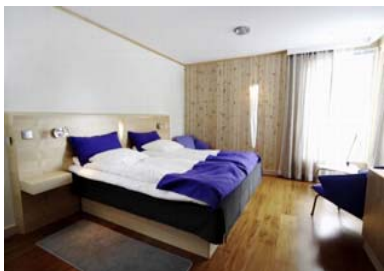
Everyone will be equipped with sleeping bags. The recommended "sleeping utensils" are long sleeved underwear, socks and a hat on your head.

You sleep in beds made out of ice on insulating and soft mattresses and reindeer hides.

Inside temperatures varies between -3 to -6 degrees Celsius depending on the outdoor temperature.

The accommodation in Icehotel is double ice suites. Supplement for single.

A three course dinner called, "Ice gourmet dinner" will be served in the Icehotel restaurant. The first and third dish, will be served on ice plates..



A guide will wake the guests sleeping in ICEHOTEL® with serving a warm non alcoholic drink.

Short walk to ICEHOTEL® Sauna department. After your morning sauna you can enjoy the breakfast buffet.

Short snowmobile sled transfer to Sami camp.

Traditional tour to a Sami camp, where you will have a glimpse into the rich Sami culture.

You will make a visit to the Jukkasjärvi village church. The oldest part of the church is the middle part section dated 1607.

But it is probably not why the church is so well visited; today the church is presumably best known for its beautiful but different wall decoration above the altar piece.

It is difficult to draw a line between painting and sculpture in the artist, Bror Hjort's altar piece.

Outside the church it is time for the big challenge-you will drive your own sledge pulled by a reindeer, following a 300 meters long track.

After the amazing adventure you will be invited to the Lappish teepee, here you will be served a traditional Sami Lunch.

You enjoy the break sitting on reindeer hides around a sparkling fire.



Arrival to Kiruna, Here you have the 4x4 jeeps waiting for you. Same model.

You will drive to Jokkmokk with a short stop along the way for sandwiches and something to drink.

When arriving to Jokkmokk you will visit the mountain- and Sami museum Ajtté. Here you will have a guided tour with an English speaking guide.

Check in at Hotel Jokkmokk where the rooms are decorated with reindeer hides, art, fruit baskets, sparkling wine and dried meat with a chopping board and a knife.

The public sauna (reserved for you) is heated and here you have snacks and beer served.

The night starts with a beautiful a short night walk under the stars to the lake beside the hotel where a tee-pee is situated on the frozen ice. The lake and the environment are decorated with burning torches. The tee-pee is decorated with reindeer hides, lanterns and candles. The food is prepared by the chef over open fire.

We start with a nice welcome drink and a Sami jojk. The dinner is a three course dinner prepared with local ingredients.

During the evening you will be entertained by 2 Sami singers.

Overnight in double rooms.



Breakfast at the hotel with arctic char, local sausage and souvas.

The tour continues to the arctic circle, a stop for a ceremony with a tinkosa, certificate and to this you are served a local drink with lingonberries and dainty sandwiches with smoked reindeer.

After the stop we continue driving to Piteå.

When arriving to Piteå the snowmobiles are waiting. Snowmobile tour to the icebreaker.

Experience something really amazing as the large pieces of ice tumbles around the icebreaker when the Ice Breaker starts through the meter thick frozen Bothnian Sea.

After a while the ship stops and you are offered to take a guaranteed exciting swim in survival suits.

An outdoor lunch is served during the Icebreaker tour and when everybody is ready the ship goes back to the harbour.

The tour takes about 2 hours and after this you go back to the cars and continue driving to Luleå.

Arrival at Hotel Nordkalotten, here you check in to mini suites with sauna.

A nice three course dinner is served in the restaurant next to the open fire.



Nordkalotten Hotel and Conference in Lulea, built of old pine logs, offers a genuine atmosphere and up to date it-solutions for modern communication.

Restaurants, Bar, Sauna and Pool available. Why not start with a horse transfer from the Airport to the Hotel. Nordkalotten Hotel and Conference in Lulea leave memories that last longer.

www.nordkalotten.com



Breakfast at the hotel

The cars are waiting for you outside the hotel, a short drive to Ice roads where you will spend about 1½ hours practicing your driving skills on special ice roads on the frozen sea.

After this you continue driving to the island Hindersön where the snowmobiles are waiting for you.

A four-hour safari where we go straight out to Brändöskär between the thousand of islands to the pack-ice fields, here the ice can build ice bergs up to 6 meters high. We do short stops for guiding and hot beverages along the way. We tell you about the extreme conditions in the far Archipelago and we also try some ice-fishing. At Brändöskär we take a look in the old chapel, a genuine cabin in the outer Archipelago.

We cook our lunch over open fire.

After this you go back to the cars and back to the hotel for a short relax.

Bus transfer to the beautiful Museum City of Gammelstad and Hägnan, three course dinner in one of the nicest house of the village.

Bus transfer back to the Hotel.





Gammelstad, at the head of the Gulf of Bothnia, is the best-preserved example of a 'church village', a unique kind of village formerly found throughout northern Scandinavia. The 424 wooden houses, huddled round the early 15th-century stone church, were used only on Sundays and at religious festivals to house worshippers from the surrounding countryside who could not return home the same day because of the distance and difficult traveling conditions.

Justification for Inscription

The Committee decided to inscribe the nominated property on the basis of cultural criteria (ii), (iv) and (v), considering that the site is of outstanding universal value as it is a remarkable example of the traditional church town of northern Scandinavia, and admirably illustrates the adaptation of conventional urban design to the special geographical and climatic conditions of a hostile natural environment.



Breakfast at the hotel

Try on dogsled on the frozen lake near the hotel.

Dog and sleds will be waiting for their guest ! After one of the nicest briefing you can ever experience, where you will learn how to speak to the dogs, participants will be ready to jump on the sledges, have the breaks and ride by themselves !

5 teams (sled with 3 / 6 dogs) will be at disposal of guests.

After this final unique experience we will be back to the hotel for a last sauna and to change clothes.

Bus transfer to Luleå Airport.

Departure with Airline Flight to Milano.

End of the program





During all event, a professional photographer will be with us to shot the best moments .

Every evening we will se the images of the day. A perfect occasion to evaluate "captains" and "crews" skills!

3 weeks after the trip you will receive a full digital "Photo Album" with a DVD Slide Show (1 DVD with all pictures + 1 DVD Show with the best shots).

